



jordan fishwick

DIDSBURY
Dene Road



Dene Road, Didsbury, M20 2ST

Guide Price £200,000



The Property

**** LEASE CAN BE EXTENDED **** - A spacious, TWO DOUBLE BEDROM, top floor apartment in the heart of Didsbury village, with fantastic far reaching views over Didsbury and beyond. (773sq.ft)

The living space incorporates a generous L-shaped entrance hall with storage off, a spacious living room with 'Juliette' balcony, a fitted kitchen, two double bedrooms with space for freestanding furniture and a bathroom with white suite.

There is lift access to all floors, well maintained communal gardens, residents parking and bike store.

The flat is offered for sale with no onward chain and a location that is hard to beat, with Didsbury Village quite literally on your doorstep.

Directions

M20 2ST



- Spacious top floor flat
- Far reaching views
- Central Didsbury Village Location
- Two Double Bedrooms
- Separate Fitted Kitchen
- Bathroom with white suite
- L-shaped entrance hall
- Lift access to all floors
- Residents Parking
- No Onward Chain

Postcode - M20 2ST

EPC Rating - E

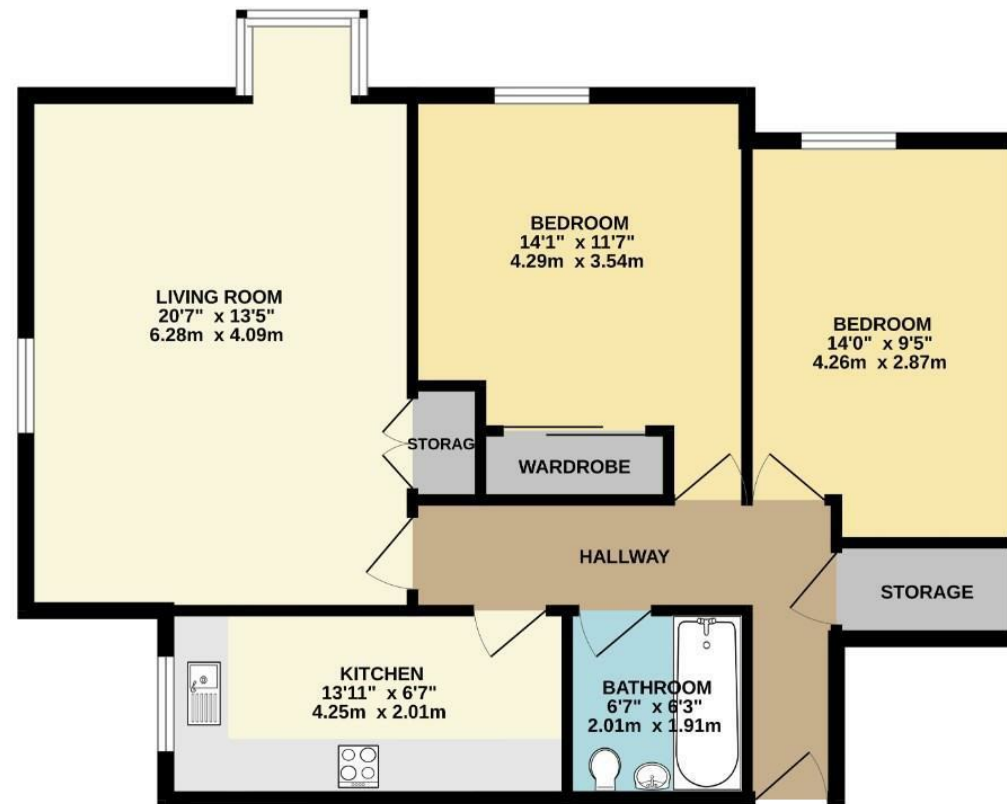
Floor Area - 773.00 sq ft

Local Authority - Manchester City Council

Council Tax - B



TOP FLOOR
773 sq.ft. (71.8 sq.m.) approx.



TOTAL FLOOR AREA : 773 sq.ft. (71.8 sq.m.) approx.
Measurements are approximate. Not to scale. Illustrative purposes only.
Made with Metropix 5/2025



These particulars are believed to be accurate but they are not guaranteed and do not form a contract. Neither Jordan Fishwick nor the vendor or lessor accept any responsibility in respect of these particulars, which are not intended to be statements or representations of fact and any intending purchaser or lessee must satisfy himself by inspection or otherwise as to the correctness of each of the statements contained in these particulars. Any floorplans on this brochure are for illustrative purposes only and are not necessarily to scale.

Offices also at: Wilmslow, Macclesfield, Hale, Sale, Chorlton, Glossop, Manchester & Salford

757-759 Wilmslow Road, Didsbury Village, Manchester

0161 445 4480

didsbury@jordanfishwick.co.uk
www.jordanfishwick.co.uk